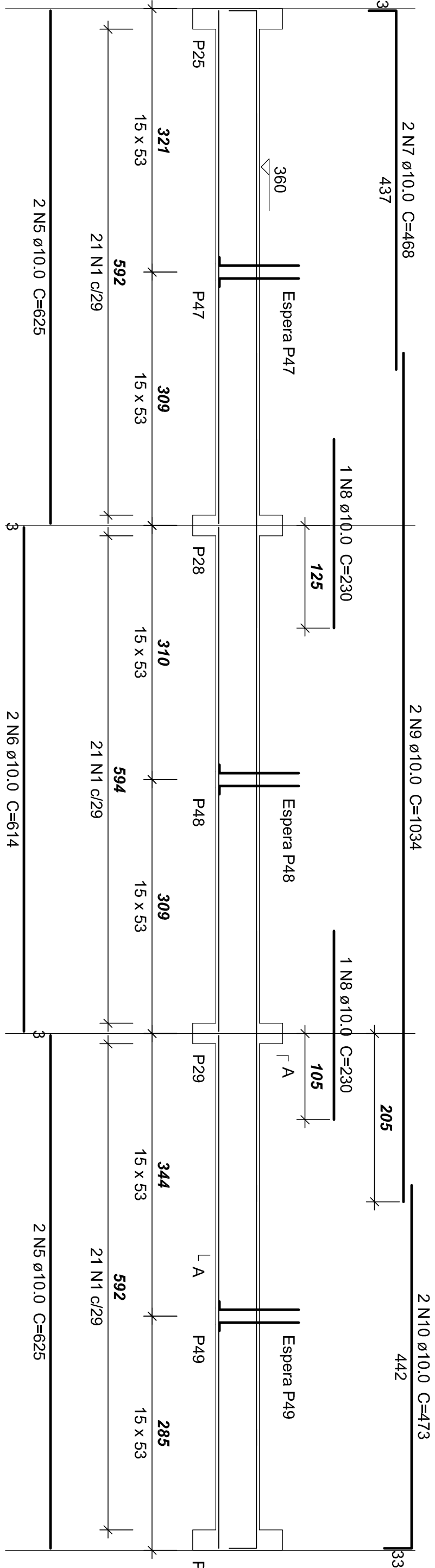
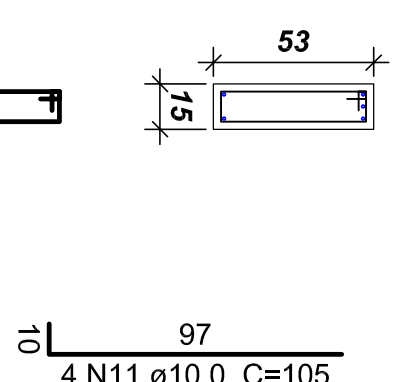


V6 (15 x 53)

1:50



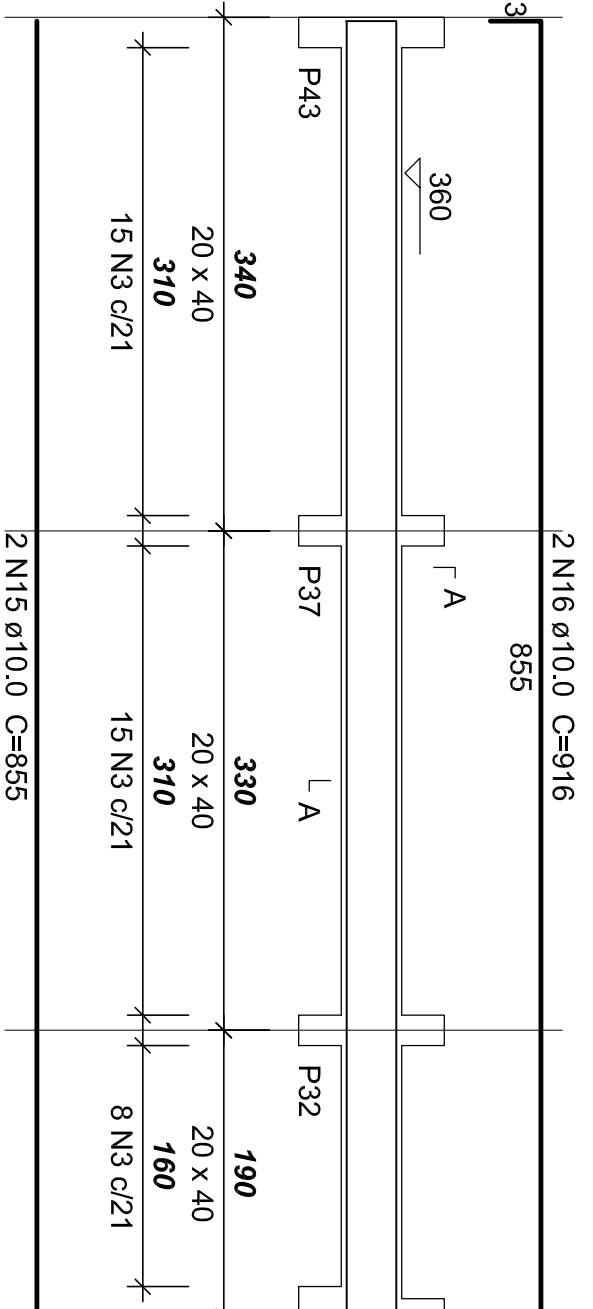
SEÇÃO A-A	Espera P49
ESC 1:25	Espera P48
	Espera P47
	ESC 1:25



3 N1 ø5.0 C=128

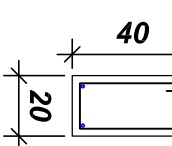
 $V_8(20 \times 40)$

50



SEÇÃO A-A

ESC 1:25



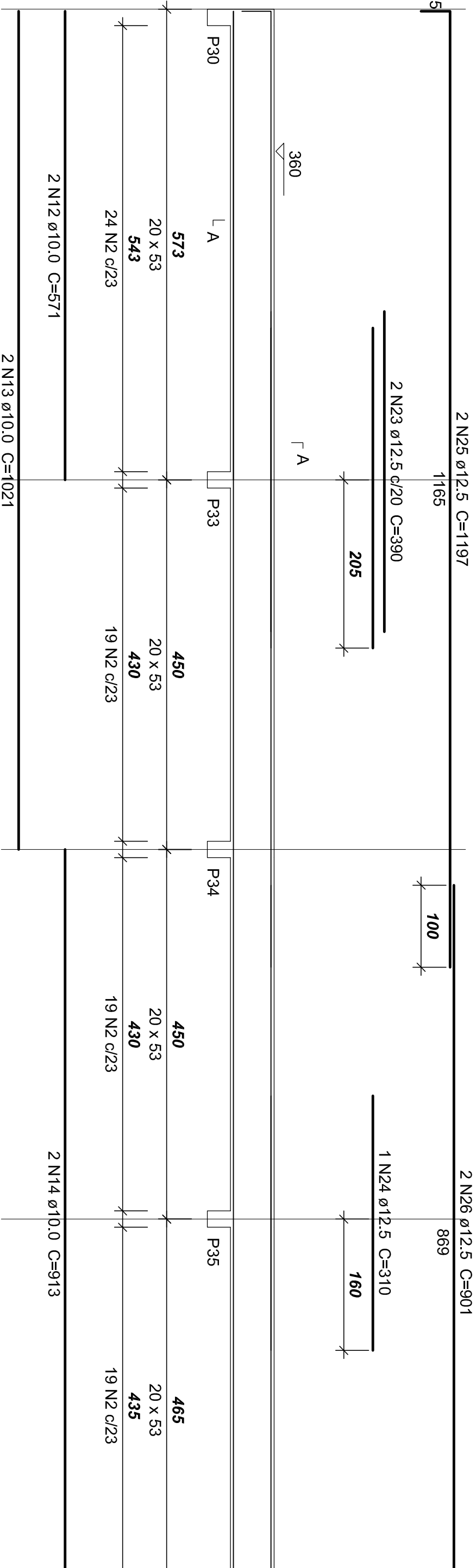
38 N3 Ø5.0 C=112

	AÇO	N	DIAM	Q	UNIT (cm)	COTIZ. (cm)	
C450	C460	1	5,0	63	138	8064	
		2	5,0	179	128	24702	
		3	5,0	38	112	4262	
		4	5,0	31	102	3156	
		5	5,0	31	102	3156	
		6	10,0	4	625	2300	
		7	10,0	4	625	2300	
		8	10,0	2	468	936	
		9	10,0	2	230	460	
		10	10,0	2	1034	2068	
		11	10,0	2	473	946	
		12	10,0	2	105	1260	
		13	10,0	2	1142	1142	
		14	10,0	2	1021	2042	
		15	14	10,0	2	913	1826
		16	16	10,0	2	855	1710
		17	17	10,0	2	850	1700
		18	18	10,0	2	855	1710
		19	19	10,0	2	865	1370
		20	20	10,0	2	720	1440
		21	21	10,0	2	1003	2006
		22	22	10,0	2	454	1542
		23	23	12,5	2	425	850
		24	24	12,5	2	390	760
		25	25	12,5	2	1157	2284
		26	26	12,5	2	901	1802
		27	27	12,5	2	850	1700
		28	28	12,5	3	400	1200
		29	29	12,5	1	345	345
		30	30	12,5	2	2400	2400
		31	31	12,5	2	1499	1498

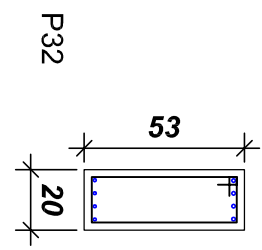
Relação do Aço Vigas da Cobertura

V7 (20 x 53)
1:50

1:50



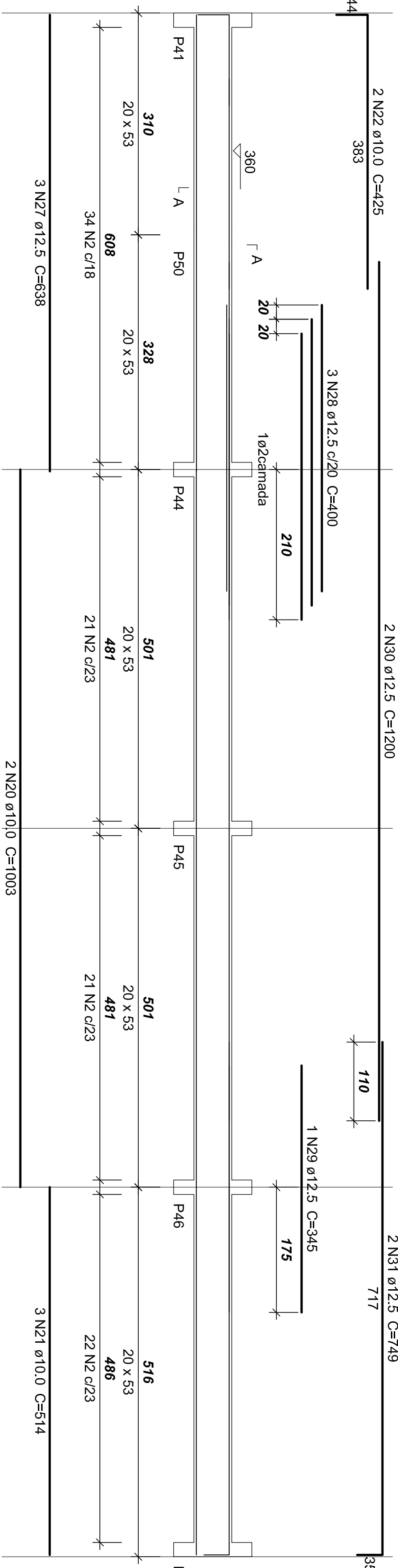
SEÇÃO A-A
ESC 1:25



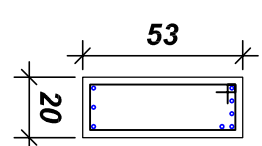
81 N2 Ø5.0 C=138

V10 (20 x 53)

1:50



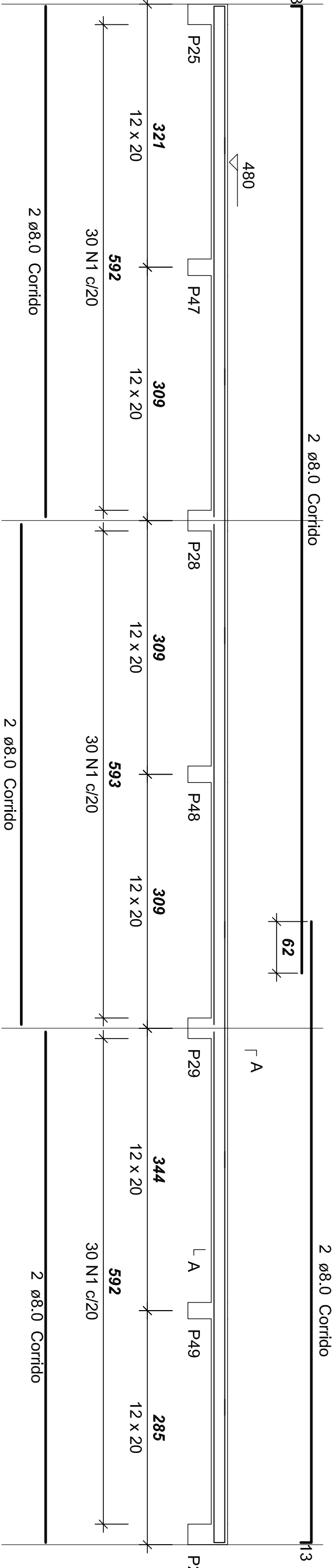
SEÇÃO A-A
ESC 1:25



98 N2 Ø5.0 C=138

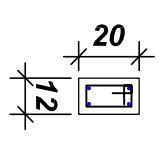
VP (12 x 20)

1:50



SEÇÃO A-A

ESC 1:25



DN1 ø5.0 C=56

Resumo do Aço Vigas da Plátibanda

AÇO	DIAM	C.TOTAL (m)	PESO (kg)
CA50	8,0	198,3	78,2
CA60	5,0	175,3	27
PESO TOTAL			
CA50	78,2		
CA60	27		

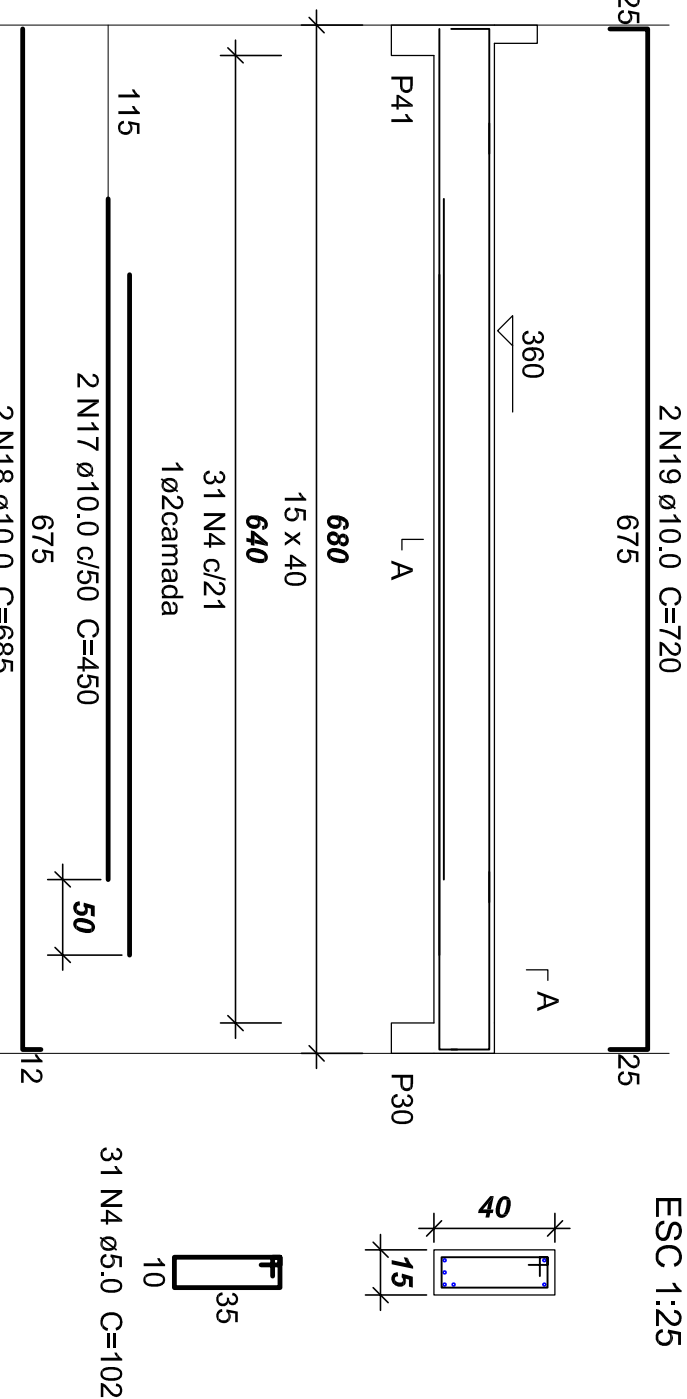
Vol. de concreto total (C-20) = 1.17 m³
Área de forma total = 25.45 m²

AÇO	DIAM	C.TOTAL (m)	PESO (kg)
CA50	10.0	260.6	160.7
	12.5	126.5	121.8
CA60	5.0	401.9	61.9
PESO TOTAL			
CA50	282.5		
CA60	61.9		

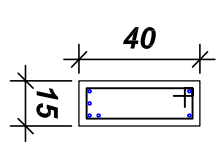
Vol. de concreto total (C-20) = 6.93 m³
Área de forma total = 89.39 m²

V9 (15 x 40)


1:50



SEÇÃO A-A
ESC 1:25



31 N4 Ø5.0 C=102

 AS BUILT PROJETOS Rua Jovino do Rosário, 1564 – Boa Vista CEP: 82260-450 Curitiba contato@asbuiltprojetos.com.br – (41)3240-8869	
OBJETO: AMPLIAÇÃO DE “LCE” PROTECTORIO UNIVERSIDADE DOS VALES DO JEQUITINHONHA E MUCURI – UFVJM ENDEREÇO: RODOVIA MT 367 – Km 553, N°5000, ALTO DA JACUBA – DIAMANTINA/MG	
PROJETO: PROJETO ESTRUTURAL	PROPOSTA: EST 11 / 17
APROVAÇÃO: FERRAGEM DAS VIGAS DA COBERTURA FERRAGEM DAS VIGAS DA PLANTANDA	DESENHO: CARLOS DATA: 04/07/2012
AUTORA DO PROJETO: ENG. CIVIL CARLOS HENRIQUE DE S. GONÇALVES	ANEXO: ESCALA:
COTA: 1/882-D/PR	